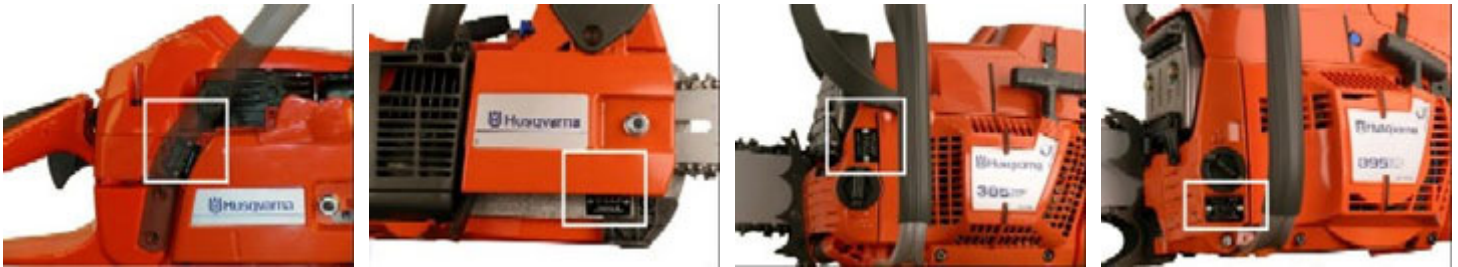


HUSQVARNA MODEL AND SERIAL NUMBERS

To Locate your model and serial number on your Husqvarna Chainsaw:

Depending on the chainsaw model, the model number is normally located on the side of the saw and there is a metal plate containing the serial number in one of the four locations pictured below.



Note: There are two numbers. The top number is the part number and the number that is directly below it is the serial number. Husqvarna Chainsaw Models 136 and 141 contain only the serial number on the plate.